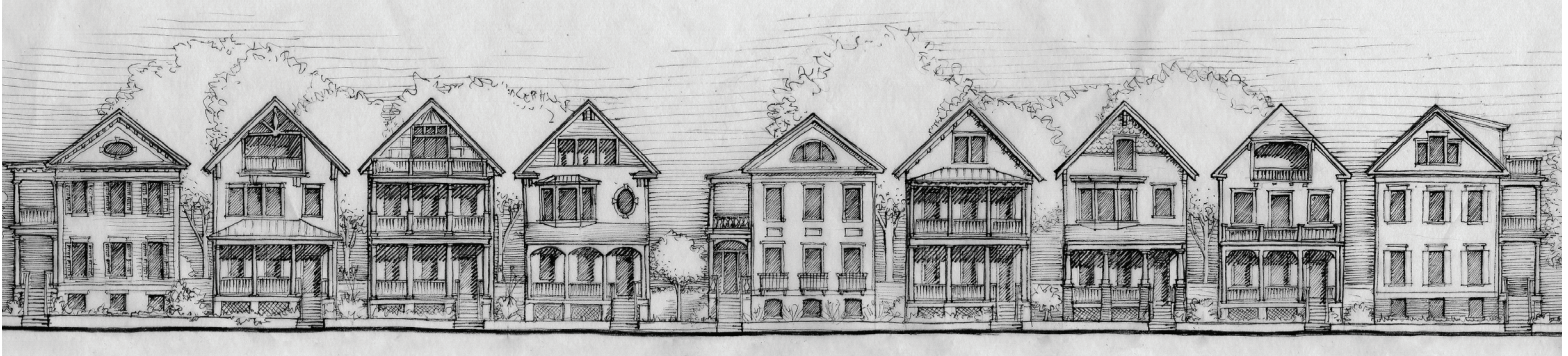


PARKWOOD HOMES

The Painted Ladies Collection

Standard Features



Open Plan Living Area

- Classic smooth wall finish paint throughout the home
- Gracious 9' ceilings on the main and bedroom floors
- Two-piece crown molding and quarter-round molding throughout main floor
- Fireplace in family room with marble surround and painted mantel
- Oak hardwood flooring on main floor
- East Coast-style wood trim on cased windows and doors throughout the home
- Slab granite bathroom countertops
- Kohler brushed nickel faucets and hardware in all bathrooms



Designer Kitchen

- Bosch stainless steel appliance package includes a 36" gas cooktop, 30" double wall ovens, 24" built-in dishwasher, 30" microwave and 36" chimney hood
- Slab granite or quartz countertops with 4" backsplash and standard double bowl, stainless steel, under mount sink
- Kitchen Craft 42" maple flat panel cabinets with crown molding in multiple finishes
- **With countless options to upgrade and personalize**



Classic Exteriors

- Fully landscaped front and rear yards with irrigation
- Option to customize with our landscape architect
- 8' deep front porches and/or side porches on all plans with options for additional outdoor space, such as a rooftop deck
- Private 2 car garage pre-wired to accommodate a future Level II charging station for electric vehicles



Modern Amenities and Green Technology

- High performance, Energy Star certified home improves indoor air quality while lowering costs
- Satin nickel lighting package with upgrade options
- Rocker style light switches throughout home
- Pre-wired for four-speaker home audio system
- Wireless security system with door and motion sensors, key pads, and interior siren
- High-efficiency Carrier gas furnace
- Programmable smart thermostat for better control while you're at home or away
- Tankless hot water heater keeps energy costs low by heating water on-demand
- Double pane, Low-E glass windows
- Solar panel system available as an option
- Blown-in fiberglass insulation in all 2 x 6 framed exterior walls and loft/attic ceilings